

## Excavations – Points to consider

- Batters
- Edge Protection
- Access / Egress
- Location (undermining adjacent structures)
- Ingress of Water
- Inspection
- Methods of Support + Temporary Works
- Perception of 2m depth
- Protection of Services
- Signage
- Excavated Material
- Protection of Public
- Excavation Equipment
- Emergency Procedures
- Training / Competent Persons
- Backfilling Techniques
- Protection of Plant
- Confined Spaces
- Soil Samples (Heavy Metals)
- Safe Systems of Work (SSOW)

## Excavations – Points during Inspection

### 1. Induction:

Proof of briefing, date, signature, relevant to site, environmental information included

### 2. Competent: Proof of training & experience

*Plant Op* - CPCS or equivalent (log book)  
*Labourer* - CSCS Card, tool box talk or other briefings and proof of experience  
*Temp Work* - Specific briefing on system

### 3. Method Statement: (MS details the following information)

Task observed at time e.g. operative down hole or machine dig

- Access / Egress
- Edge protection
- Temp works, batters or steps
- PPE
- RA + COSHH
- Details of ground conditions
- Emergency Procedures
- Environmental Consideration

### 4. Risk Assessment: (RA details the following risk)

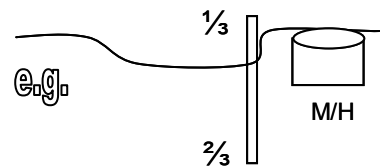
- Risk of collapse
- Risk of Ground movement
- Risk of Crushing from materials
- Risk of falls
- Underground Services
- Confined Space (if applicable)
- Risk of Plant moving
- Environmental Risks

### 5. Briefing:

Proof of briefing on Risk Assessment / Method Statement must be seen

### 6. Equipment & Material:

Excavator / Compactor - Is Plant Suitable for job/task at hand, check condition of plant i.e. safe pins on excavator, buckets etc  
 Temporary works - suitable and match ground conditions  
 Ladders or steps  
 Material Storage



### 7. Risks from Equipment & Material:

Link back to Risk Assessment based on Equipment & Material used (are risks from use of equipment detailed on RA)

### 8. Equipment Inspected/Examined:

Is equipment inspected/examined as per PUWER / LOLER (old F91), 12 monthly, ladder inspections, excavation inspection etc

### 9. Personal Protective Equipment (PPE):

Link back to Risk Assessment specific to ground conditions if applicable

### 10. Worker describes risks Risks/Hazards:

Ask worker to tell you about the risks/hazards on site associated with the activity

### 11. Worker describes Control Measures:

Ask worker to tell you the control measures on site associated with the activity

### 12. Activity carried out Safely:

SWS General Observations: (Personal Comments)  
 Batters [OK], Access [OK], Egress [OK], Working to MS/RA [OK]